



Let **UK** Home

4 Bedrooms

House

Located in London

£3,900 Per Month



info@letukhome.co.uk

<https://www.letukhome.co.uk/>

01795 358 886



Barnfield Place London

E14 9YA



Let UK Home are excited to offer this spacious four-bedroom House in Barnfield Place development located in the Isle of Dogs, just minutes from Canary Wharf.

This fully furnished accommodation is set over 3 floors. This property comprises a large bright open plan kitchen and living room leading to a large private rear garden, four double bedrooms(master en-suite), a large family sized bathroom, a toilet room and ample storage. A virtual viewing is provided. Additionally, a parking space is provided.

Set in a well-maintained development, the house is moments from the riverside and within easy reach of Mudchute Park, Millwall Park, and local amenities. Crossharbour and Mudchute DLR stations are nearby, providing quick access to Canary Wharf, the City, and central London. Canary Wharf offers fashionable retail opportunities, a 24 hour supermarket complex, and has a lively social scene with restaurants and bars to suit all tastes.

Mudchute Station is within walking distance, where you can take the DLR directly to the core area of Canary Wharf, with fast connections to the Jubilee Line and Elizabeth Line. From Canary Wharf, taking the Jubilee Line allows access to multiple hubs in central London, including Oxford Street, while traveling via the DLR in the Docklands area can reach the City of London's old financial district, London City Airport, and other locations.

The area around the development is surrounded by prestigious universities, all easily accessible by public transport, such as the University of Greenwich, Queen

Barnfield Place London

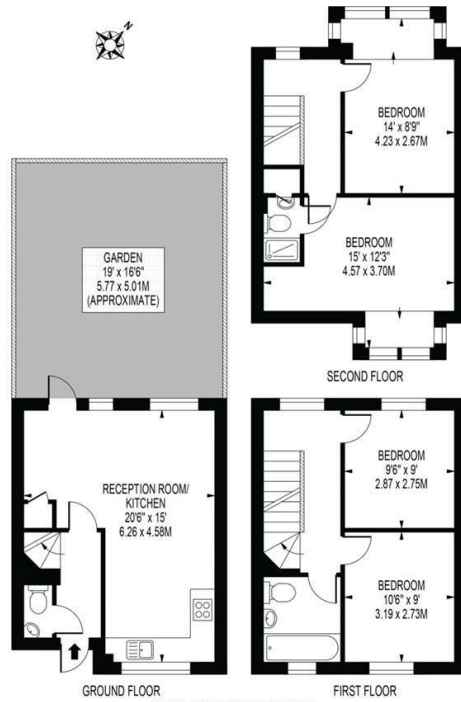
£3,900 Per Month



- House
- Close to Local Shops
- Virtual Viewing Available
- Parking Space
- Close to Transport Links
- EPC Rating: C



BARNFIELD PLACE



THIS FLOOR PLAN SHOULD BE USED AS A GENERAL OUTLINE FOR GUIDANCE ONLY AND DOES NOT CONSTITUTE IN WHOLE OR IN PART AN OFFER OR CONTRACT. ANY INTENDING PURCHASER OR LESSEE SHOULD SATISFY THEMSELVES BY INSPECTION, SEARCHES, ENQUIRIES AND FULL SURVEY AS TO THE CORRECTNESS OF EACH STATEMENT. ANY AREAS, MEASUREMENTS OR DISTANCES QUOTED ARE APPROXIMATE AND SHOULD NOT BE USED TO VALUE A PROPERTY OR BE THE BASIS OF ANY SALE OR LET.

Total floor area 81 square metres



Let **UK** Home

3F 2 Eastbourne Terrace
Paddington
London
W2 6LG

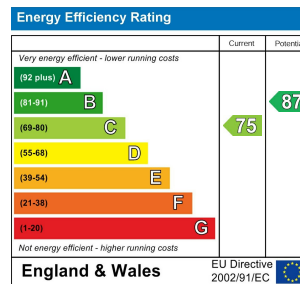
01795 358 886

info@letukhome.co.uk

Council Tax Band: E

Local Authority:

Agents Note: Whilst every care has been taken to prepare these particulars, they are for guidance purposes only. All measurements are approximate and are for general guidance purposes only and whilst every care has been taken to ensure their accuracy, they should not be relied upon and potential buyers/tenants are advised to recheck the measurements.



<https://www.letukhome.co.uk/>